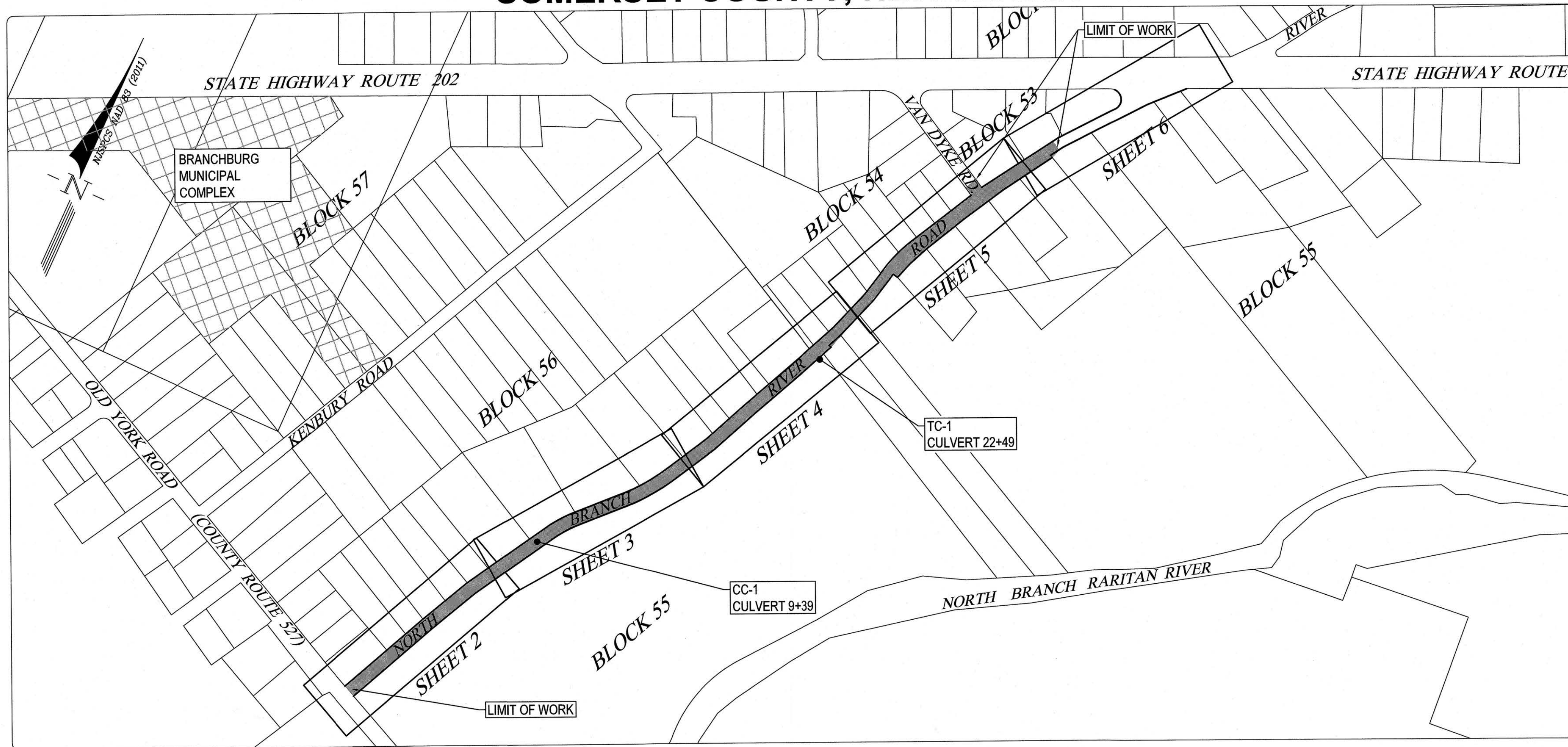


NORTH BRANCH RIVER ROAD IMPROVEMENTS

TOWNSHIP OF BRANCHBURG SOMERSET COUNTY, NEW JERSEY



revisions			
no.	date	description	by
1	7/16/19	REVISED PER SUSCD COMMENTS	SAW
2	5/16/20	REVISED	SAW
3	8/31/20	REVISED	SAW
4	3/7/22	REVISED PER COUNTY COMMENTS	SAW

LEGEND	
	GAS VALVE
	GAS METER
	WATER VALVE
	HYDRANT
	WATER METER
	CURB STOP
	DRAINAGE MH
	CURB INLET
	LAWN INLET
	DOUBLE INLET
	FLAT INLET
	SANITARY MH
	CLEANOUT
	BOLLARD
	SIGN
	LIGHT
	GUY WIRE
	UTILITY POLE
	ELECTRIC MH
	CONIFEROUS TREE
	DECIDUOUS TREE
	FENCE
	GATE POST
	WATER LINE
	GAS LINE
	ELECTRIC LINE
	SANITARY LINE
	OVERHEAD WIRES
	TELCO LINE
	MONITORING WELL
	TEST PIT
	TELCO MH
	MONUMENT SET
	CAPPED IRON PIN FOUND
	CAPPED IRON PIN SET

The Reynolds Group Inc.
 Engineers
 Landscape Architects
 Land Surveyors
 Planners
 575 Route 28, Suite 110
 Raritan, N.J. 08869
 908-722-1500
 Fax 908-722-7035
 www.REYNOLDSGRP.com

F. Mitchell Ardman, P.E., P.P.
 Jeffrey D. Reynolds, P.L.A.

DAVID C. COLEMAN, PLS
 PROFESSIONAL LAND SURVEYOR, N.J. No. GS35826

- NOTES**
- This survey is only valid when embossed seal is affixed hereto.
 - The certification shown hereon is not transferable to additional institutions or subsequent owners.
 - The Reynolds Group, Inc. and/or its employees are not liable for errors within, and/or omissions from any documents provided by others.
 - Underground utilities shown hereon are approximate, their accuracy or completeness are not guaranteed by the surveyor. Mark outs from utility companies and field confirmation by the contractor must be made prior to construction so that disturbance or disruption to these utilities may be avoided.
 - Horizontal Datum is NAD83(2011) EPOCH(2010.00) (U.S. SURVEY FOOT) and Vertical Datum is NAVD 88(GEOID 12A) based on GPS observations.
 - Depths of Gas and Water lines as shown are based upon general information from utility companies only. No test pits were taken or as-built information was utilized to determine depths.
 - All construction shown hereon unless specifically noted otherwise, shall be in accordance with the New Jersey Department of Transportation 2019 standard specifications for road and bridge construction as amended by the supplementary technical specifications.
 - The NJDOT Standard Construction details for roadway, traffic control, and bridge booklet (2016); and the NJDOT Standard Electrical details booklet (2007), are applicable to this project except for those details contained herein.
 - Trees with less than a 6" caliper shall be paid under Site Clearing and Restoration.

- REFERENCES**
- Map entitled, "Robbins-Hockenbury Section of William Bradley Estate Branchburg Township Somerset County, NJ," prepared by William H. Cunningham and dated June 1947 and filed in the Office of the Clerk of Somerset County October 16, 1947 as Map No. 180.
 - Map entitled, "William Bradley Estate Vosseller Section Branchburg Township Somerset County N.J.," prepared by William H. Cunningham and dated December 8, 1938 and filed in the Office of the Clerk of Somerset County on May 22, 1946 as Map No. 161.
 - Map entitled, "Final Map Subdivision of Lot 11 Block 55 Branchburg Township, Somerset County New Jersey," prepared by Templin Engineering Associates and revised to January 16, 1996 and filed in the Office of the Clerk of Somerset County on July 23, 1997 as Map No. 191.
 - Survey of Lot 8 Block 56 prepared by Saladin Associates, P.C. dated 12-09-10 file #ST66608
 - Official Tax Map of Branchburg Township Sheet #16.
 - Map entitled, "New Jersey State Highway Department General Property Parcel Map Route 29(1927) Section 12 Route U.S. 202(1958) Centerville To Frelinghuysen Ave showing existing Right of Way and parcels to be acquired in the Township of Readington & Township of Branchburg and Bridgewater dated September 1958 Sheet 7A map number 29-206.
 - Map entitled, "New Jersey State Highway Department General Property Key Map Route 29 Section 12 Centerville To Frelinghuysen Ave showing existing Right of Way and parcels to be acquired in the Township of Readington & Township of Branchburg and Bridgewater dated May 1932 Sheet 2 of 2 map number 29-206.
 - CIS mapping provided by PSE&G showing Gas and Electric Utilities, maps dated April 23, 2018.
 - Map provided by Elizabeth Town Water Company showing water utilities.
 - Maps entitled, "Sanitary Sewer Program, Township of Branchburg Somerset County New Jersey, dated March 1971, map numbers 21-24 of 38.

KEY MAP
 1" = 250'

- SHEET INDEX**
- T-1 TITLE SHEET
 - T-2 PLAN AND PROFILE, STA. 0+00 TO 7+50
 - T-3 PLAN AND PROFILE, STA. 7+50 TO 16+00
 - T-4 PLAN AND PROFILE, STA. 16+00 TO 24+50
 - T-5 PLAN AND PROFILE, STA. 24+50 TO 33+00
 - T-6 PLAN AND PROFILE, STA. 33+00 TO 39+50
 - CC-1 PLAN AND PROFILE OF CULVERT AT STA. 22+49
 - TC-1 PLAN AND PROFILE OF CULVERT AT STA. 22+49
 - SEC-1 SOIL EROSION CONTROL PLANS
 - SEC-2 SOIL EROSION CONTROL PLANS
 - SEC-3 SOIL EROSION CONTROL DETAILS
 - CD-1 CONSTRUCTION DETAILS
 - CD-2 CONSTRUCTION DETAILS
 - CD-3 CONSTRUCTION DETAILS
 - CD-4 CONSTRUCTION DETAILS
 - GR-1 GUIDERAIL LAYOUT
 - X-1 CROSS SECTIONS
 - X-2 CROSS SECTIONS
 - X-3 CROSS SECTIONS
 - TCP-1 TRAFFIC CONTROL PLAN

STRUCTURES IN THIS CONTRACT	
CULVERT CC-1 AT STA. 9+39	SOMERSET COUNTY BRIDGE NO. D0713
CULVERT TC-1 AT STA. 22+49	BRANCHBURG TOWNSHIP CULVERT

TOWNSHIP OF BRANCHBURG
 1077 ROUTE 202 N., BRANCHBURG N.J. 08876
 COUNTY OF SOMERSET
 TELE: (908) 826-1300 FAX: (908) 826-2452 WWW.BRANCHBURG.NJ.US

TITLE SHEET FOR
NORTH BRANCH RIVER ROAD IMPROVEMENTS
 BRANCHBURG TOWNSHIP
 SOMERSET COUNTY, NEW JERSEY

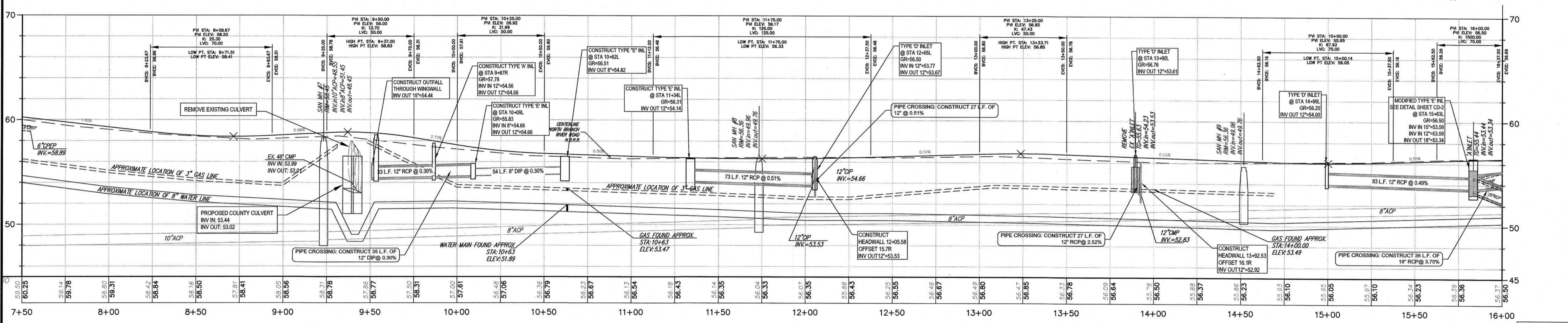
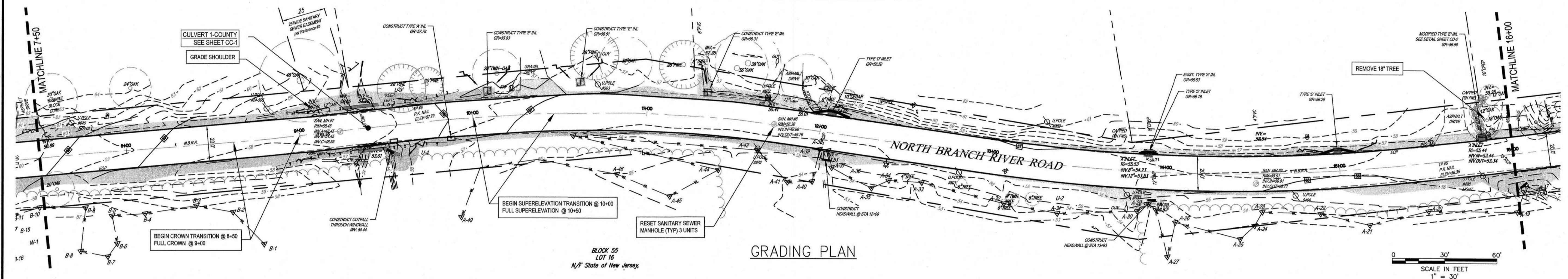
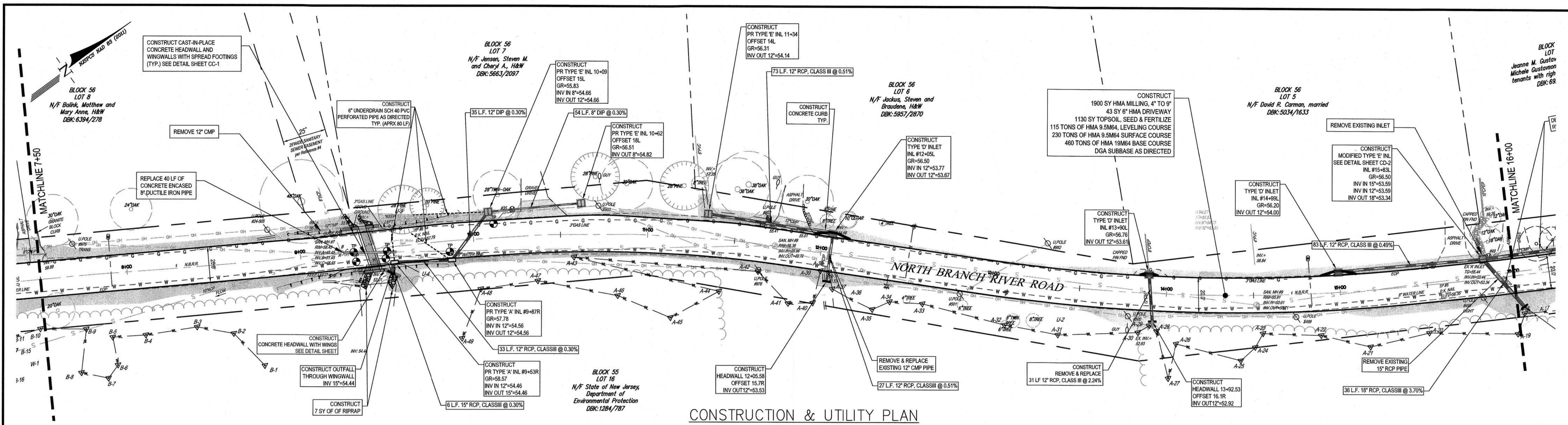
Douglas A. Baal
DOUGLAS A. BAAL P.E. - TOWNSHIP ENGINEER
 New Jersey Professional Engineer License No. GEO41594000
 DRN. BY: SAW | Scale: N.T.S. | Date: 3.11.19

COVER SHEET

drawing title
 NORTH BRANCH RIVER RD
 from
 OLD YORK ROAD to ROUTE 202 NORTH
 TOWNSHIP OF BRANCHBURG
 SOMERSET COUNTY, NEW JERSEY

job number 18-014	drawing number T-1
scale AS SHOWN	
checked by DCC	
drawn by TW	
date 5/17/18	sheet 1 of 6

C:\USERS\ADMIN\TOWNSHIP OF BRANCHBURG\ENGINEERING\DEPT 2 - STREETS AND ROADS\ROAD RECONSTRUCTION PROJECTS\NORTH BRANCH RIVER ROAD IMPROVEMENT PROJECT - 18-014\18-014.dwg



LEGEND

- ⊕ GAS VALVE
- ⊕ GAS METER
- ⊕ WATER VALVE
- ⊕ HYDRANT
- ⊕ WATER METER
- ⊕ CURB STOP
- ⊕ DRAINAGE MH
- ⊕ CURB INLET
- ⊕ LAWN INLET
- ⊕ DOUBLE INLET
- ⊕ FLAT INLET
- ⊕ SANITARY MH
- ⊕ CLEANOUT
- ⊕ SIGN
- ⊕ LIGHT
- ⊕ GUY WIRE
- ⊕ UTILITY POLE
- ⊕ ELECTRIC MH
- ⊕ CONIFEROUS TREE
- ⊕ DECIDUOUS TREE
- ⊕ FENCE
- ⊕ GATE POST
- ⊕ WATER LINE
- ⊕ GAS LINE
- ⊕ ELECTRIC LINE
- ⊕ SANITARY LINE
- ⊕ OVERHEAD WIRES
- ⊕ TELCO LINE
- ⊕ MONITORING WELL
- ⊕ TEST PIT
- ⊕ TELCO MH
- ⊕ MONUMENT SET
- ⊕ CAPPED IRON PIN FOUND
- ⊕ CAPPED IRON PIN SET

The Reynolds Group Inc.
 State of New Jersey
 Certificate of Authorization
 Number 2462796200
 Number 21MH0004300
 F. Mitchell Ardman, P.E., P.P.
 Jeffrey D. Reynolds, P.L.A.

DAVID C. COLEMAN, PLS
 PROFESSIONAL LAND SURVEYOR, N.J. No. G535826

PLAN & PROFILE

drawing title
 NORTH BRANCH RIVER RD
 from
 OLD YORK ROAD TO ROUTE 202 NORTH
 TOWNSHIP OF BRANCHBURG
 SOMERSET COUNTY, NEW JERSEY

job number 18-014 drawn by TW
 scale V: 1"=5' H: 1"=30' date 5/17/18
 checked by DCC

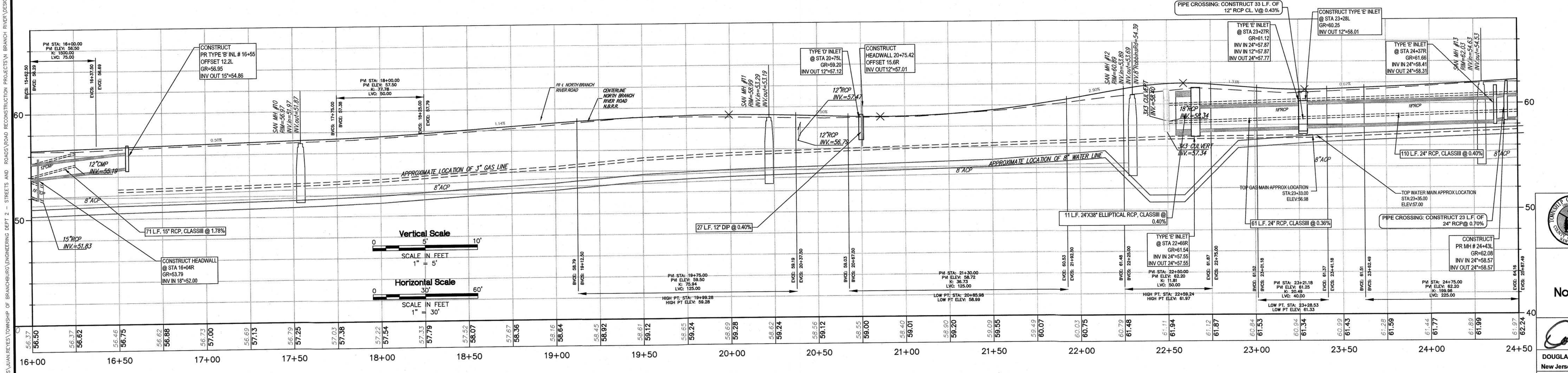
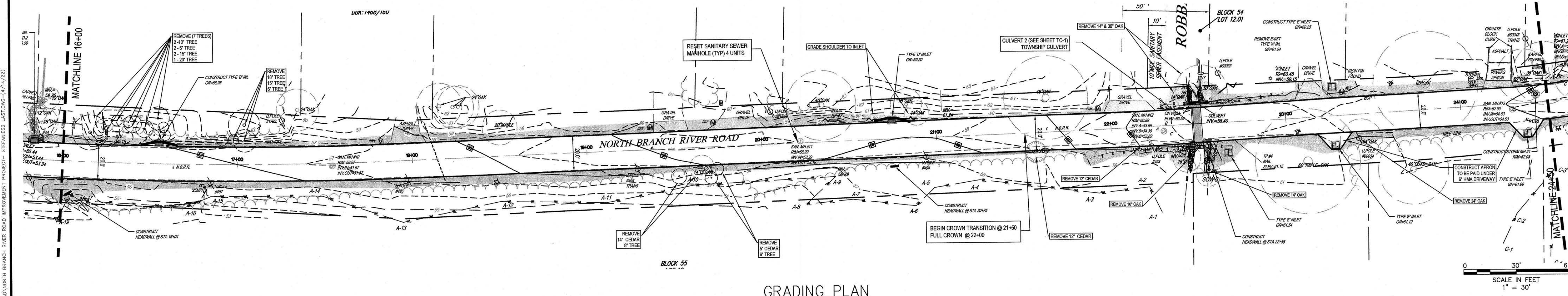
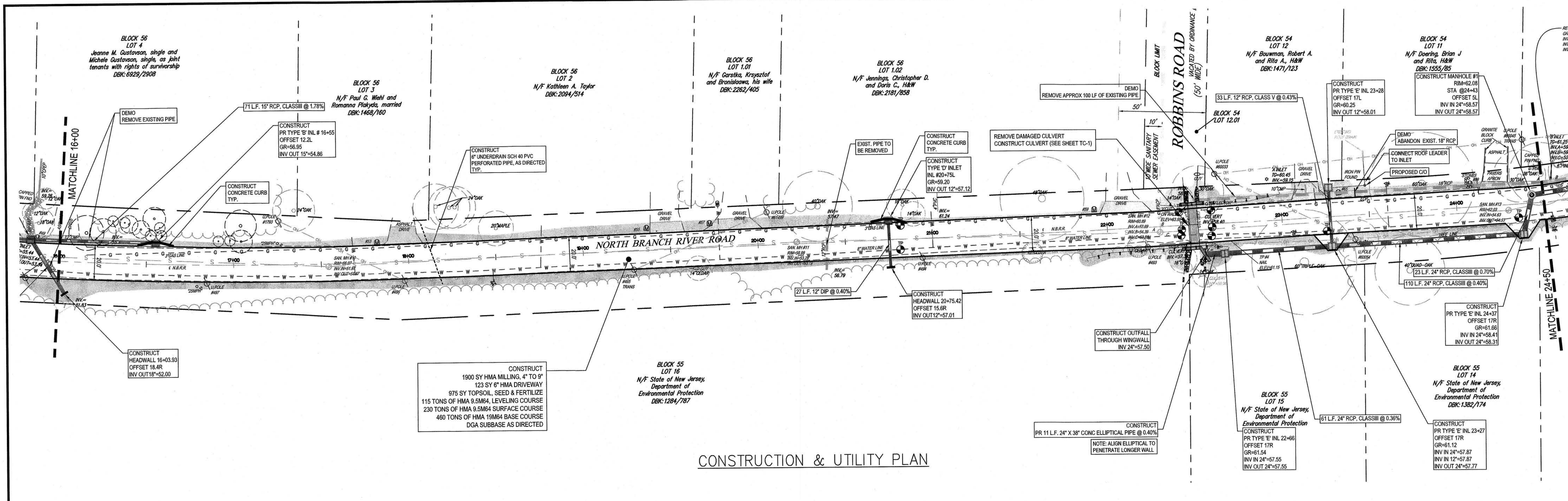
revisions			
no.	date	description	by
1	7/16/19	REVISED PER SUSCO COMMENTS	SAW
2	5/16/20	REVISED	SAW
3	8/31/20	REVISED	SAW
4	3/7/22	REVISED PER COUNTY COMMENTS	SAW

TOWNSHIP OF BRANCHBURG
 1077 ROUTE 202 N., BRANCHBURG N.J. 08876
 COUNTY OF SOMERSET
 TEL: (908) 526-1300 FAX: (908) 526-2462 WWW.BRANCHBURG.NJ.US

PLAN AND PROFILE FOR
North Branch River Road Improvements
 BRANCHBURG TOWNSHIP
 SOMERSET COUNTY, NEW JERSEY

Douglas A. Baj
 DOUGLAS A. BAJ, P.E. - TOWNSHIP ENGINEER
 New Jersey Professional Engineer License No. GE041594000
 DRN. BY: SAW Scale: N.T.S. Date: 3.11.19

T - 3



LEGEND

- ⊗ GAS VALVE
- ⊗ GAS METER
- ⊗ WATER VALVE
- ⊗ HYDRANT
- ⊗ WATER METER
- ⊗ CURB STOP
- ⊗ DRAINAGE MH
- ⊗ CURB INLET
- ⊗ LAWN INLET
- ⊗ DOUBLE INLET
- ⊗ FLAT INLET
- ⊗ SANITARY MH
- ⊗ CLEANOUT
- ⊗ SIGN
- ⊗ LIGHT
- ⊗ GUY WIRE
- ⊗ UTILITY POLE
- ⊗ ELECTRIC MH
- ⊗ CONIFEROUS TREE
- ⊗ DECIDUOUS TREE
- X FENCE
- ⊗ GATE POST
- W WATER LINE
- G GAS LINE
- E ELECTRIC LINE
- S SANITARY LINE
- OH OVERHEAD WIRES
- T TELCO LINE
- ⊗ MONITORING WELL
- ⊗ TEST PIT
- ⊗ TELCO MH
- ⊗ MONUMENT SET
- CAPPED IRON PIN FOUND
- CAPPED IRON PIN SET

The Reynolds Group Inc.
 State of New Jersey
 Certificate of Authorization
 Number 24GA27969200
 Number 21MH00043000
 F. Mitchell Ardan, P.E., P.P.
 Jeffrey D. Reynolds, P.L.A.

DAVID C. COLEMAN, PLS
 PROFESSIONAL LAND SURVEYOR, N.J. No. GS35826

PLAN & PROFILE

drawing title
 NORTH BRANCH RIVER RD
 from
 OLD YORK ROAD TO ROUTE 202 NORTH
 TOWNSHIP OF BRANCHBURG
 SOMERSET COUNTY, NEW JERSEY

job number 18-014 drawn by TW

scale V: 1"=5'
 H: 1"=30' date 5/17/18

checked by DCC

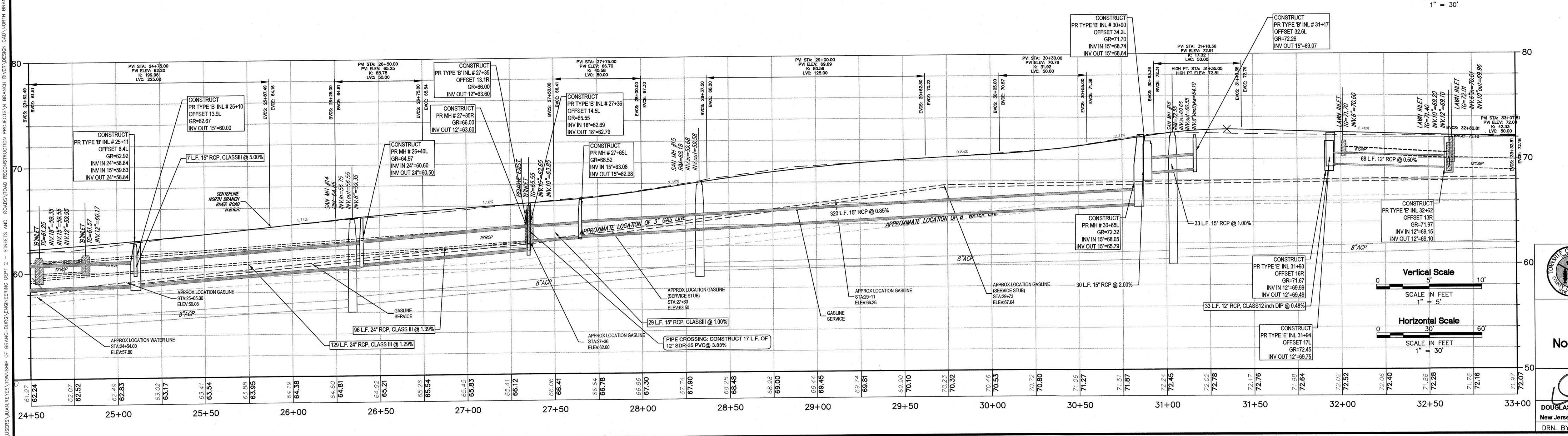
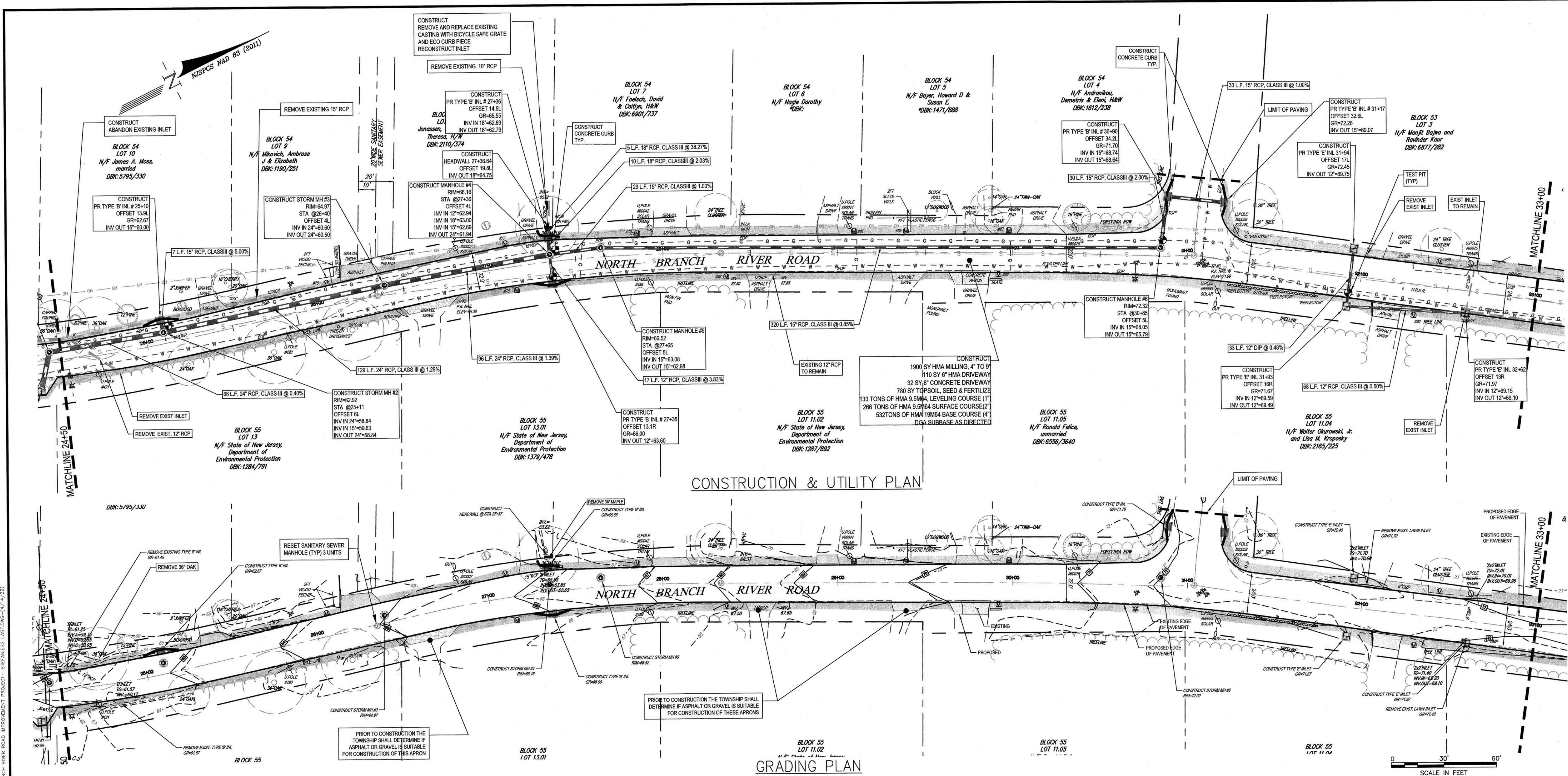
revisions			
no.	date	description	by
1	7/16/19	REVISED PER SJUSD COMMENTS	SAW
2	5/16/20	REVISED	SAW
3	8/31/20	REVISED	SAW
4	3/7/22	REVISED PER COUNTY COMMENTS	SAW

TOWNSHIP OF BRANCHBURG
 1077 ROUTE 202 N., BRANCHBURG N.J. 08876
 COUNTY OF SOMERSET
 TELE: (908) 526-1300 FAX: (908) 526-2462 WWW.BRANCHBURG.NJ.US

PLAN and PROFILE FOR
 North Branch River Road Improvements
 BRANCHBURG TOWNSHIP
 SOMERSET COUNTY, NEW JERSEY

Douglas M. Ball
 DOUGLAS M. BALL P.E. - TOWNSHIP ENGINEER
 New Jersey Professional Engineering License No. GE041594000
 DRN. BY: SAW | Scale: 1"=30' | Date: 3.11.2019

T - 4



LEGEND

- ⊕ GAS VALVE
- ⊕ GAS METER
- ⊕ WATER VALVE
- ⊕ HYDRANT
- ⊕ WATER METER
- ⊕ CURB STOP
- ⊕ DRAINAGE MH
- ⊕ CURB INLET
- ⊕ LAWN INLET
- ⊕ DOUBLE INLET
- ⊕ FLAT INLET
- ⊕ SANITARY MH
- ⊕ CLEANOUT
- ⊕ SIGN
- ⊕ LIGHT
- ⊕ GUY WIRE
- ⊕ UTILITY POLE
- ⊕ ELECTRIC MH
- ⊕ CONIFEROUS TREE
- ⊕ DECIDUOUS TREE
- ⊕ FENCE
- ⊕ GATE POST
- ⊕ WATER LINE
- ⊕ GAS LINE
- ⊕ ELECTRIC LINE
- ⊕ SANITARY LINE
- ⊕ OVERHEAD WIRES
- ⊕ TELCO LINE
- ⊕ MONITORING WELL
- ⊕ TEST PIT
- ⊕ TELCO MH
- ⊕ MONUMENT SET
- ⊕ CAPPED IRON PIN FOUND
- ⊕ CAPPED IRON PIN SET

The Reynolds Group Inc.
 State of New Jersey
 Certificate of Authorization
 Number 24GA27969200
 Number 21MH0004300
 F. Mitchell Ardman, P.E., P.P.
 Jeffrey D. Reynolds, P.L.A.

DAVID C. COLEMAN, PLS
 PROFESSIONAL LAND SURVEYOR, N.J. No. GS35826

PLAN & PROFILE

drawing title
 NORTH BRANCH RIVER RD
 from
 OLD YORK ROAD to ROUTE 202 NORTH
 TOWNSHIP OF BRANCHBURG
 SOMERSET COUNTY, NEW JERSEY

job number 18-014 drawn by TW
 scale V: 1"=5'
 H: 1"=30' date 5/17/18
 checked by DCC

revisions

no.	date	description	by
1	7/16/19	REVISED PER SUB COMMENTS	SAW
2	5/16/20	REVISED	SAW
3	8/31/20	REVISED	SAW
4	3/7/22	REVISED PER COUNTY COMMENTS	SAW

TOWNSHIP OF BRANCHBURG
 1077 ROUTE 202 N., BRANCHBURG N.J. 08876
 COUNTY OF SOMERSET
 TELE: (908) 526-1300 FAX: (908) 526-2462 WWW.BRANCHBURG.NJ.US

PLAN AND PROFILE FOR
 North Branch River Road Improvements
 BRANCHBURG TOWNSHIP
 SOMERSET COUNTY, NEW JERSEY

Douglas A. Baci
DOUGLAS A. BACI, P.E., TOWNSHIP ENGINEER
 New Jersey Professional Engineer License No. GE04159400
 DRN. BY: SAW Scale: 1"=30' Date: 3.11.19

